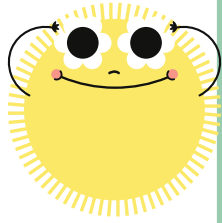


# Solving One-Step Equation

## MULTIPLY AND DIVIDE WITH DECIMALS



### HELPFUL EXAMPLES

$$y \div 2.5 = 4.5$$

GET THE NUMBERS AND VARIABLES ON OPPOSITE SIDE OF THE EQUAL SIGN.

TO MOVE A NUMBER OR VARIABLE, USE THE OPPOSITE OPERATION. MULTIPLICATION AND DIVISION ARE OPPOSITES, SEE HOW WE MULTIPLIED BOTH SIDES BY 2.5?

$$y \div 2.5 = 4.5$$

$$\underline{\times 2.5 = \times 2.5}$$

$$y \div 1 = 11.25$$

$$y = 11.25$$

CHANGE Y TO 11.25 AND SEE IF THE ANSWER MAKES SENSE

$$11.25 \div 2.5 = 4.5$$

TRUE

Now your turn. Solve each equation.

1.  $29.2 = 8 \times s$

$$\begin{array}{r} \div 8 \quad \div 8 \\ \hline 29.2 \div 8 = s \end{array}$$

2.  $4.6 = y \div 3.8$

3.  $12.2 = t \div 0.2$

4.  $0.8 \times g = 5.4$

5.  $n \div 3.5 = 2.4$

6.  $p \times 1.8 = 7.2$

7.  $\frac{b}{1.2} = 8.2$

8.  $3.46 = 0.4h$

9.  $8e = 18.62$

10.  $64.6 = \frac{p}{6}$

11.  $\frac{m}{0.5} = 8.75$

12.  $31.4 = 4.4u$

