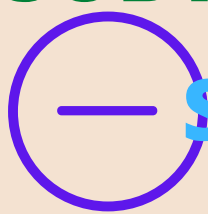


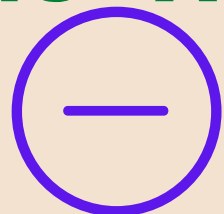


SUBTRACTING MULTIPLE DIGITS - A



SUBTRACT:

ANSWERS



$$\begin{array}{r} 1. \quad 21,345 \\ - 12,430 \\ \hline 8,915 \end{array}$$

$$\begin{array}{r} 2. \quad 56,012 \\ - 48,750 \\ \hline 7,262 \end{array}$$

$$\begin{array}{r} 3. \quad 45,765 \\ - 3,905 \\ \hline 41,860 \end{array}$$

$$\begin{array}{r} 4. \quad 32,478 \\ - 12,430 \\ \hline 20,048 \end{array}$$

$$\begin{array}{r} 5. \quad 23,250 \\ - 11,874 \\ \hline 11,376 \end{array}$$

$$\begin{array}{r} 6. \quad 70,321 \\ - 64,833 \\ \hline 5,488 \end{array}$$

$$\begin{array}{r} 7. \quad 44,344 \\ - 1,550 \\ \hline 42,794 \end{array}$$

$$\begin{array}{r} 8. \quad 64,713 \\ - 21,525 \\ \hline 43,188 \end{array}$$

$$\begin{array}{r} 9. \quad 180,523 \\ - 052,231 \\ \hline 128,292 \end{array}$$

$$\begin{array}{r} 10. \quad 323,650 \\ - 222,363 \\ \hline 101,287 \end{array}$$

$$\begin{array}{r} 11. \quad 615,586 \\ - 340,209 \\ \hline 275,377 \end{array}$$

$$\begin{array}{r} 12. \quad 822,461 \\ - 32,050 \\ \hline 790,411 \end{array}$$

$$\begin{array}{r} 13. \quad 243,565 \\ - 24,789 \\ \hline 218,776 \end{array}$$

$$\begin{array}{r} 14. \quad 631,421 \\ - 235,842 \\ \hline 395,579 \end{array}$$

$$\begin{array}{r} 15. \quad 640,432 \\ - 530,658 \\ \hline 109,774 \end{array}$$

$$\begin{array}{r} 16. \quad 976,488 \\ - 375,786 \\ \hline 600,702 \end{array}$$

$$\begin{array}{r} 17. \quad 2,123,776 \\ - 1,245,440 \\ \hline 878,336 \end{array}$$

$$\begin{array}{r} 18. \quad 3,430,566 \\ - 0,231,755 \\ \hline 3,198,811 \end{array}$$

$$\begin{array}{r} 19. \quad 7,780,460 \\ - 5,450,333 \\ \hline 2,330,127 \end{array}$$

$$\begin{array}{r} 20. \quad 6,540,640 \\ - 4,204,830 \\ \hline 2,335,810 \end{array}$$

$$\begin{array}{r} 21. \quad 64,175,523 \\ - 32,541,660 \\ \hline 31,633,863 \end{array}$$

$$\begin{array}{r} 22. \quad 51,275,645 \\ - 23,320,648 \\ \hline 27,954,997 \end{array}$$

$$\begin{array}{r} 23. \quad 25,144,513 \\ - 5,690,202 \\ \hline 19,454,311 \end{array}$$

$$\begin{array}{r} 24. \quad 43,287,624 \\ - 11,155,493 \\ \hline 32,132,131 \end{array}$$



SUBTRACTING MULTIPLE DIGITS - B

ANSWERS

1. $55,451 - 26,984$

$$\begin{array}{r} 55,451 \\ -26,984 \\ \hline \end{array}$$

26,467

LINE UP
NUMBERS
CORRECTLY



2. $43,290 - 31,655$

$$\begin{array}{r} 43,290 \\ -31,655 \\ \hline \end{array}$$

11,635

3. $58,680 - 32,050$

$$\begin{array}{r} 58,680 \\ -32,050 \\ \hline \end{array}$$

26,630



4. $87,422 - 53,400$

$$\begin{array}{r} 87,422 \\ -53,400 \\ \hline \end{array}$$

34,022

5. $12,659 - 3,655$

$$\begin{array}{r} 12,659 \\ - 3,655 \\ \hline \end{array}$$

9,004

6. $53,148 - 41,067$

$$\begin{array}{r} 53,148 \\ - 41,067 \\ \hline \end{array}$$

12,081

7. $412,620 - 143,678$

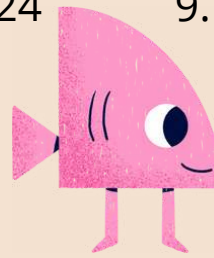
$$\begin{array}{r} 412,620 \\ -143,678 \\ \hline \end{array}$$

268,942

8. $735,467 - 361,424$

$$\begin{array}{r} 735,467 \\ -361,424 \\ \hline \end{array}$$

374,043



9. $541,679 - 260,545$

$$\begin{array}{r} 541,679 \\ -260,545 \\ \hline \end{array}$$

281,134

10. $814,727 - 475,941$

$$\begin{array}{r} 814,727 \\ -475,941 \\ \hline \end{array}$$

338,786

11. $675,480 - 440,336$

$$\begin{array}{r} 675,480 \\ -440,336 \\ \hline \end{array}$$

235,144

12. $875,421 - 670,523$

$$\begin{array}{r} 875,421 \\ -670,523 \\ \hline \end{array}$$

204,898

13. $1,246,854 - 340,238$

$$\begin{array}{r} 1,246,854 \\ - 340,238 \\ \hline \end{array}$$

906,616

14. $4,550,762 - 1,342,649$

$$\begin{array}{r} 4,550,762 \\ -1,342,649 \\ \hline \end{array}$$

3,208,113

16. $8,276,351 - 5,490,387$

$$\begin{array}{r} 8,276,351 \\ -5,490,387 \\ \hline \end{array}$$

2,785,964

6. $22,535,642 - 11,261,487$

$$\begin{array}{r} 22,535,642 \\ -11,261,487 \\ \hline \end{array}$$

11,274,155

17. $56,751,480 - 32,430,411$

$$\begin{array}{r} 56,751,480 \\ -32,430,411 \\ \hline \end{array}$$

24,321,069

18. $47,710,899 - 9,101,753$

$$\begin{array}{r} 47,710,899 \\ - 9,101,753 \\ \hline \end{array}$$

38,609,146

