

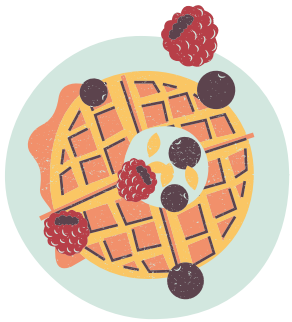
CHEF MILLIE'S WORD PROBLEMS.

The Starbelly restaurant has 19 tables that can each seat 4 people. In the centre of each table is a flower vase with 5 orchid. Every Tuesday, chef Millie always buys fresh orchids for each table. Each one cost \$2.43 at Jane's flower shop. The restaurant is almost full always & she cooks approximately 65 meals an evening. On Monday, chef Millie went to Jane's flower shop. How much money did she spent in flower shop.



Chef Millie's famous Berry waffles . Below is the recipe:

- # $\frac{3}{4}$ cup flour
- # 1 teaspoon baking powder
- # 1 tablespoon coconut oil
- # 1 medium berry
- # 1 teaspoon vanilla extract
- # 1 large egg
- # $\frac{1}{2}$ cup milk



The recipe above serves 4 . But she is hosting a family dinner tonight and she has to make waffles for 16 people. How much milk she will need?

Chef Millie has 27 tablespoon rectangular shape block of butter , but only needs 9 tablespoons for her pancakes. What is the quickest way to measure. 9 tablespoons of butter using ectangle.

