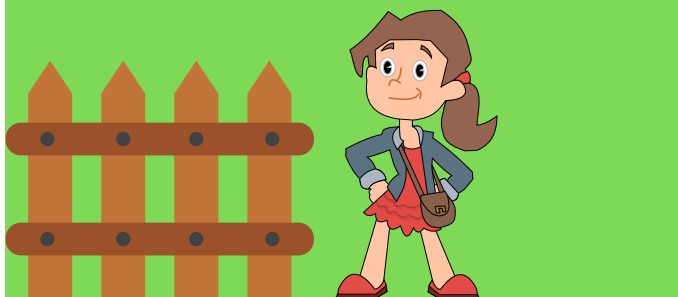


# Answer

1. Perimeter of square =  $4 \times \text{side}$   
=  $4 \times 25$   
= 100 yards  
Perimeter of garden is 100 yards.



2. Cost of pencil box =  $1 \times \$2 = \$2$   
Cost of notebooks =  $2 \times \$3 = \$6$   
Cost of craft paper =  $1 \times \$4 = \$4$   
Total =  $\$2 + \$6 + \$4$   
=  $\$12$



3. Distance sam rides to playground = 1.5 miles.  
Distance sam rides back to home = 1.5 miles.  
Total distance he rides each day =  $1.5 \times 2$   
= 3.0 miles.



4. 1 hour = 60 min.  
Total time employee has =  $6 \times 60$   
= 360 min.  
Total time required for verification =  $450 \times 20\text{min.}$   
= 1000min.  
He will not be able to complete verification as he has 360 minutes to complete but needs 1000minutes.



5. Per day earning =  $\$9$   
For a week =  $6 \times \$9$   
=  $\$54$



6. Time taken by red car to finish = 1 hour 13 min.  
(1 hour = 60 min.)  
= 60 min. + 13 min.  
= 73 min.  
Time taken by blue car = time by red car + 10 min.  
= 73 min. + 10min.  
= 83min.  
Red car finished in 83 min. or 1 hour 23 minutes.

